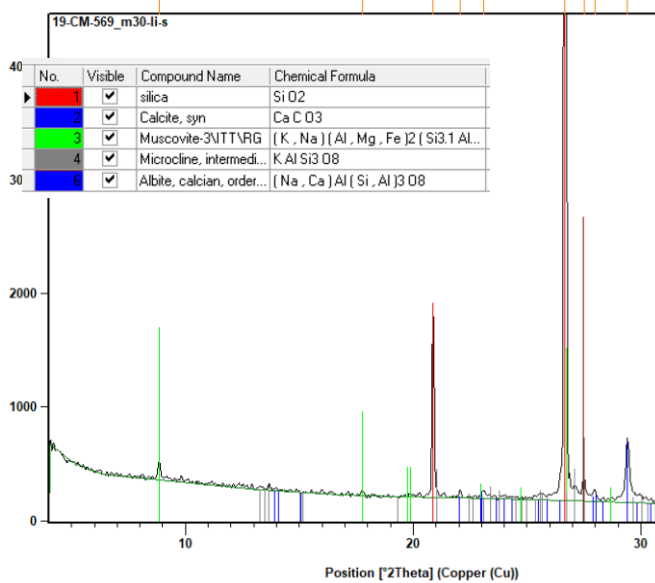


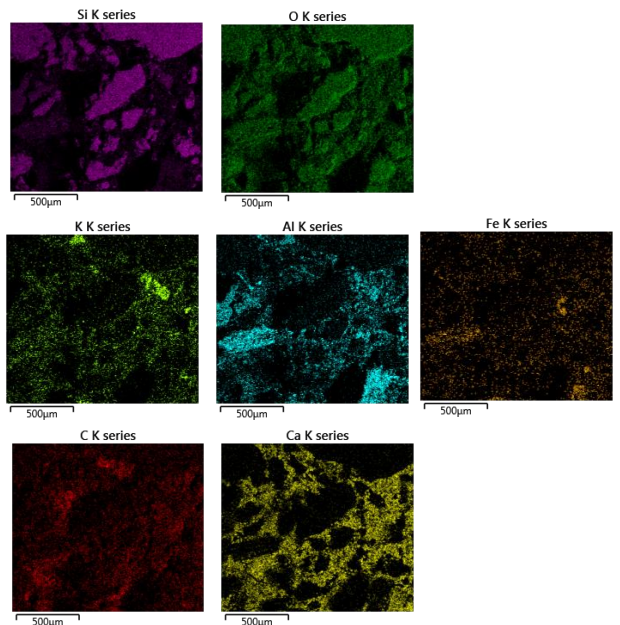
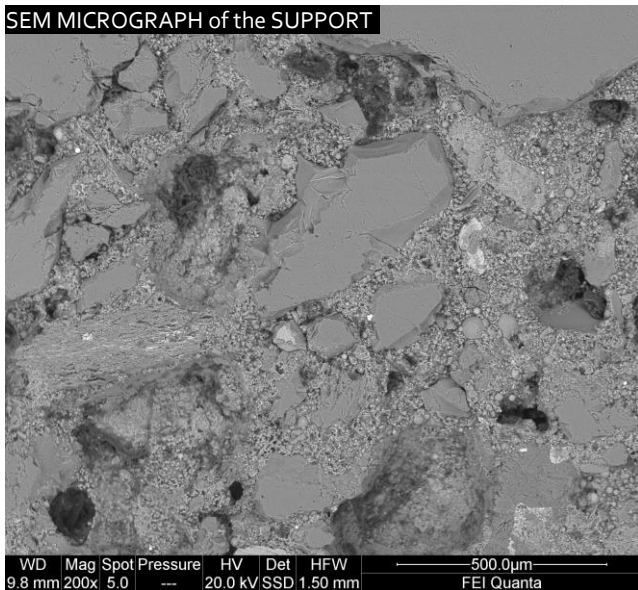
Object 1. *Entaraña*-LIOEN-Vigo 2008

Characterization of MATERIALS-SUPPORT – January 2020



DESCRIPTION	Concrete render on brick wall (upper part) Exposed reinforced concrete Wall (bottom) Northwest (N40W) facing wall
ANALYSIS	x-ray diffraction SEM-EDS
RESULTS	COMPOSITION Aggregate –silicate Cement phase-Portland cement with fly ash CONSERVATION STATE Highly porous Carbonated

SEM MICROGRAPH of the SUPPORT



This document was produced within the project ***Conservation of Art in Public Spaces (CAPuS)***.

Authors:

Teresa Rivas Brea, Enrique Alonso Villar, Santiago Pozo Antonio- UNIVERSIDADE DE VIGO (SPAIN)



Education, Audiovisual and
Culture Executive Agency
Erasmus+: Higher Education-Knowledge
Alliances, Bologna Support, Jean Monnet

CAPuS project has received funding from the
European Commission, Programme Erasmus+
Knowledge Alliances 2017, Project N°
588082-EPP-A-2017-1-IT-EPPKA2-KA

The European Commission's support for the production of this publication does not constitute an endorsement of the contents, which reflect the views only of the authors, and the Commission cannot be held responsible for any use which may be made of the information contained therein.